

UPDATE
18th June
2020



www.meadowbank.church

Love never fails

Folks

It will still be some weeks yet before we can open the church for limited purposes as we need to ensure that we follow all guidelines and are as safe as we possibly can be for any coming to church.

The building may be closed but through all this we continue to be a community of prayer. I know that many people have been challenged by the situation we face. As individuals and on a global level we need to hold fast to our faith in God's love as we see it in Jesus—that love never fails.

**Love compels us
to stand together in prayer
with our neighbours
near and far**

Hear our prayers

For the health workers
tending the seriously ill
for the scientists
working on a vaccination
for the researchers
analysing data and identifying trends
for the media outlets
working to communicate reality
for the supermarket workers,
hygiene and sanitation providers
for the good news stories
of recoveries and effective planning
for the singing from balconies
by locked-down communities
for the recognition that isolation
doesn't need to mean loneliness
for the notes through letterboxes
offering help and support
for the internet and telephones
and technology that connects
for the awakened appreciation
of what is truly important

Thanks be to God.

For those who are unwell
and concerned for loved ones
for those who were already very anxious
for those immune suppressed or compromised
for those vulnerable
because of underlying conditions
for those in the 'most at risk to coronavirus'
for those watching their entire
income stream dry up
for those who have no choice
but to go out to work
for those who are afraid to be at home
for those who are more lonely
than they've ever been
for those who are bereaved and grieving.

God be their healer, comfort and protection,
be their strength, shield and provision
be their security, safety and close companion

And raise up your Church
to be your well-washed hands and faithful feet
to be present to the pain
to respond with love in action
if even from a safe distance.

God, in your mercy, Hear our prayer.

Jackie Wilson-Tagoe

Programme & Outreach Worker

(Jackie is on furlough until July 2020)

Russell McLarty—Transition Minister

Mobile – 07751 755986

russellmclarty@churchofscotland.org.uk

Meadowbank Church of Scotland, 83 London Road, Edinburgh EH75TT

Meadowbank Church of Scotland, Edinburgh is a Scottish Charity SCO000052

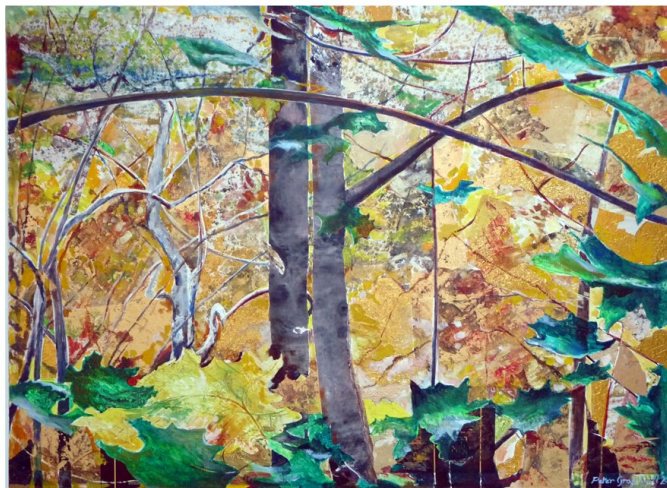
Peter Gray has been busy in lockdown!

"Soon after finishing work for last year's Annual Summer Musselburgh Exhibition I was contacted by a friend who I've worked with setting up the paintings sale in the Undercroft at the Christian Aid Book Sale at St. Andrews & St Georges West. I was offered 4 large scale frames for not much money. I already had a 3ft x 5ft frame sitting in the studio. With lockdown there was a good opportunity to create images on a big scale with some uninterrupted time and with no prospect of a Musselburgh show in 2020."



'Journey of the leaf' - This was the last picture I did for Musselburgh Art Club Summer Exhibition 2019. The addition of the leaf was very much a final touch and indicated the way that lightweight flotsam is transported by bigger elements and forces. The 3 pictures below were in response to a visit to Canada Isobel and I went on last year - the leaf as a motif for our own fragile place in the world we live in. I had photographs of leaves falling into water that was relatively calm and also had the idea of combining leaves flying to meet faster moving torrents.

'Leaves in flight' - This image is formed by combining large areas of pre-printed papers torn and arranged to form rock structures cut through by the fast flowing water heading off to the distance. The water is done by combining oil pastels with water based pigments and using the natural 'resist' of the pastels. The colour of water in the glacial regions is very striking in its variety of greens and the idea is that the leaves are flying from their 'home tree' to the moving water 'conveyor' to the next stage of the journey.



'Leaves before the fall' - This image is achieved by using acrylics and other water based paints in combination with collaged areas of chocolate wrapping papers, particularly gold foil, and pre-printed scraps. This is a colour scheme I had not tried before and some of the problems of working on a large scale on board presented new challenges but I was keen to develop the idea of the leaf before the Fall as I could see a spiritual meaning emerging..

'Leaves afloat' - I was keen to show something of the big areas of sky and mountain ranges that we passed through on our journey through the Canadian Rockies. When we were in Canada the locals told us it was unseasonably cold for the time of year. One of the images I used caught the moment just after a leaf had landed and caused a ripple to disturb the reflection.



Peter Gray is a member of Palmerston Place Church who has joined us at Meadowbank with his wife Isobel. He is serving as our Session Clerk and offers huge support and encouragement.